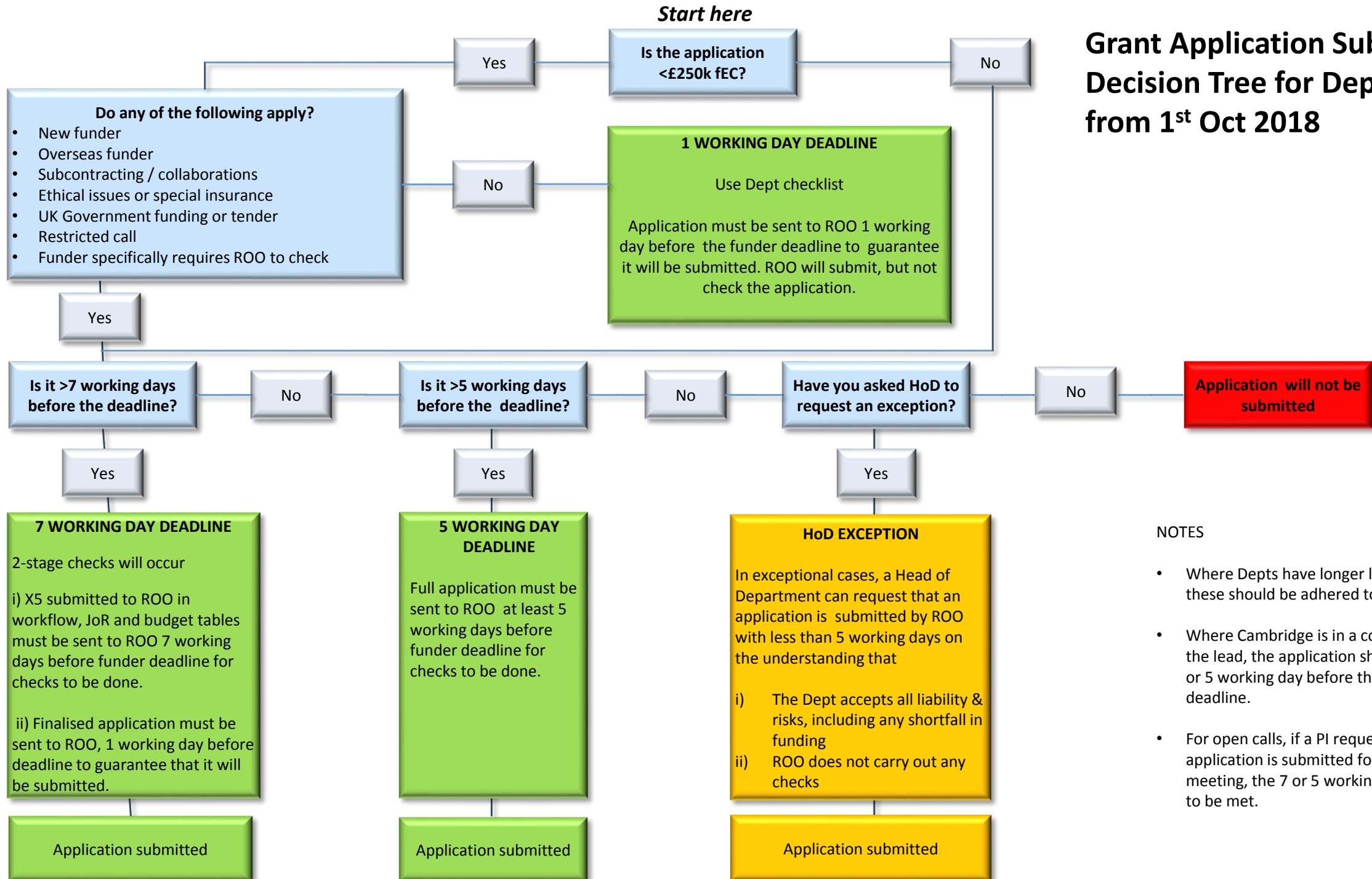


# Grant Application Submission – Decision Tree for Departments from 1<sup>st</sup> Oct 2018



## NOTES

- Where Depts have longer lead times than ROO, these should be adhered to.
- Where Cambridge is in a collaboration and is not the lead, the application should be with ROO 7 or 5 working day before the partner institution deadline.
- For open calls, if a PI requests that the application is submitted for a particular panel meeting, the 7 or 5 working day deadline needs to be met.