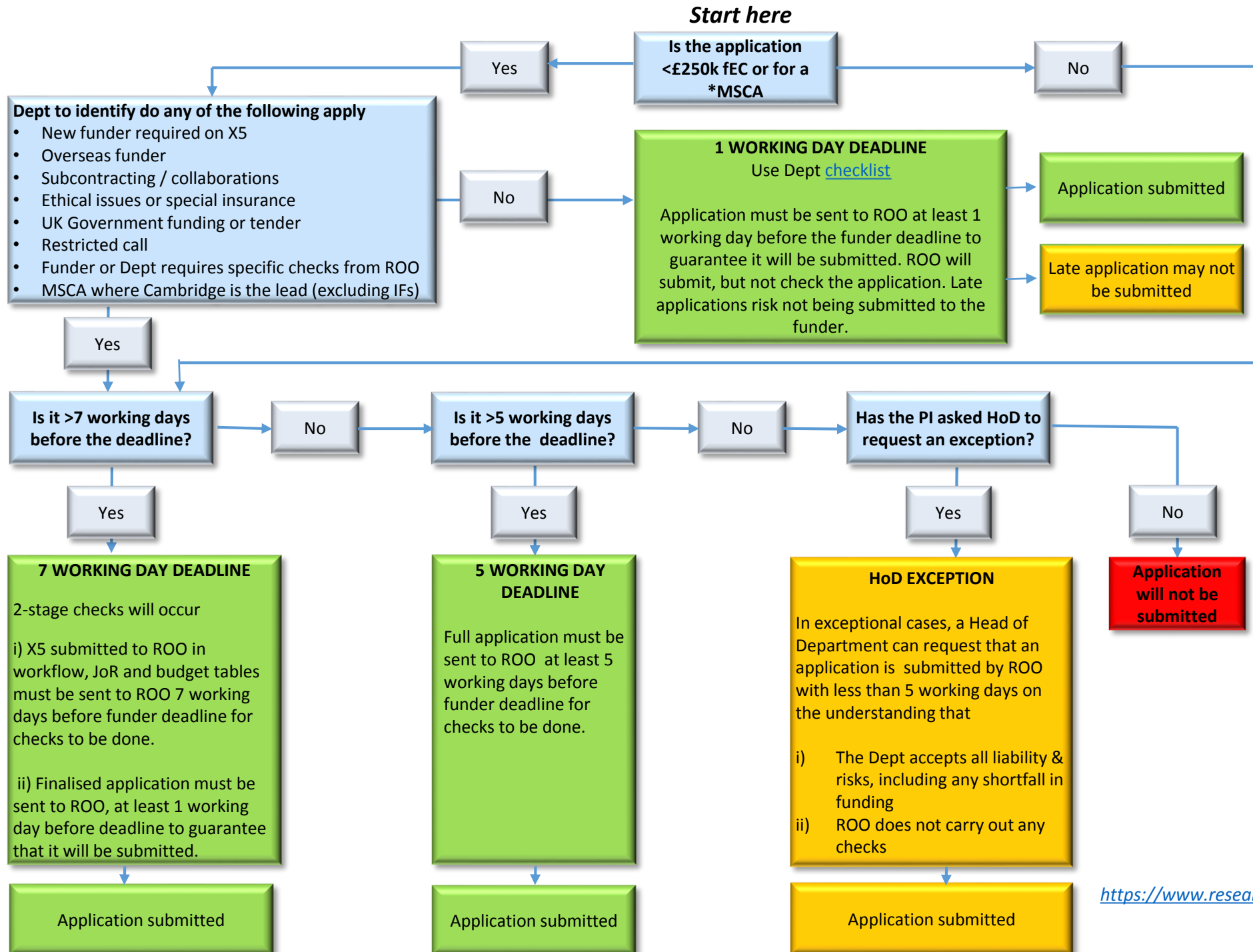


## Grant Application Submission Deadlines for Departments



### NOTES

- \*The Marie Skłodowska-Curie Actions
- Where Depts have longer lead times than ROO, these should be adhered to.
- Where Cambridge is in a collaboration and is not the lead, the application should be with ROO at least 7 or 5 working day before the partner institution deadline.
- For open calls, if a PI requests that the application is submitted for a particular panel meeting, the 7 or 5 working day deadline needs to be met.

<https://www.research-operations.admin.cam.ac.uk/submitgrantapp>